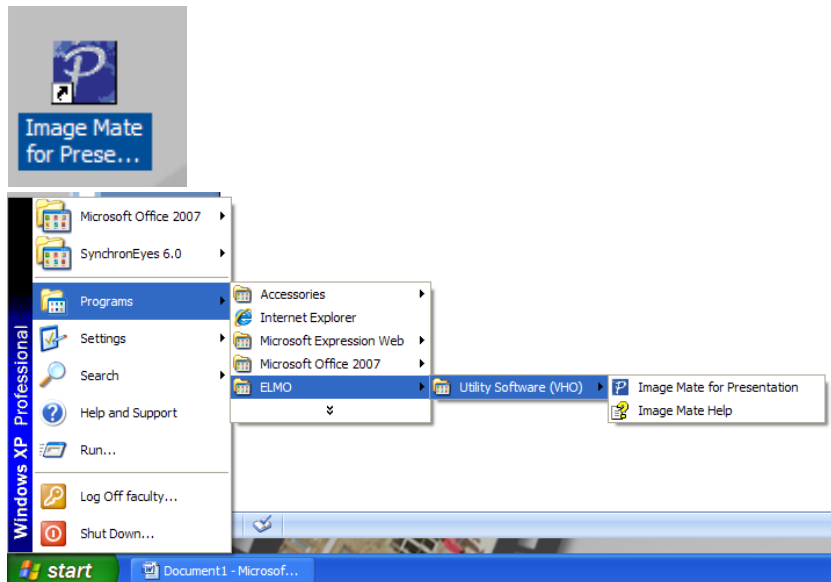


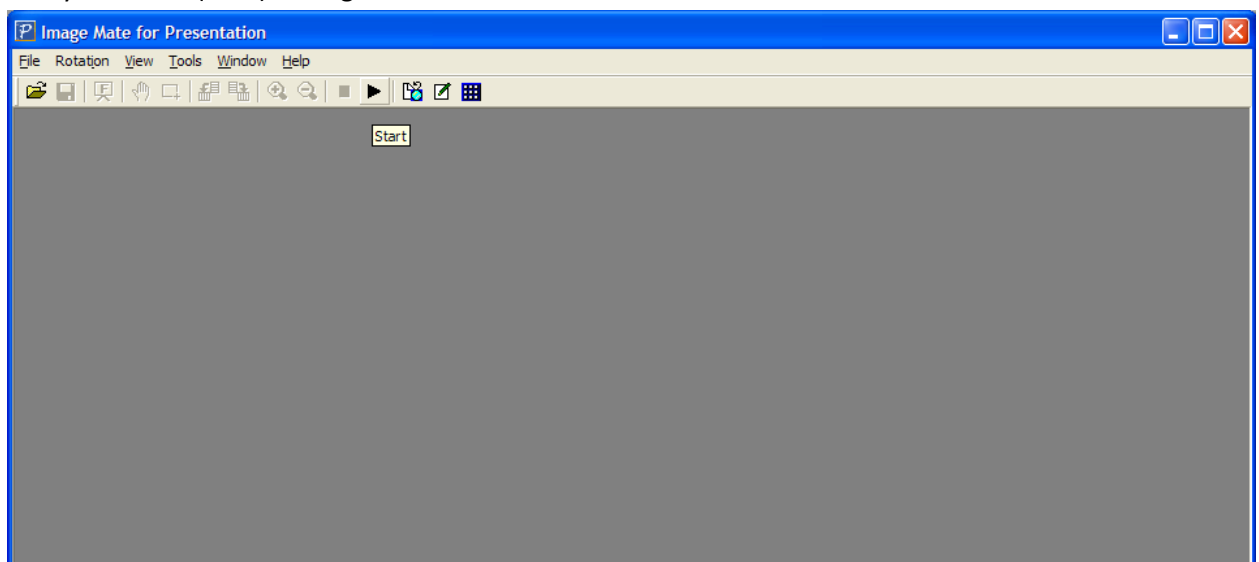
Using the Image Mate for Presentation Software with the Elmo Document Camera

By Scott Badger

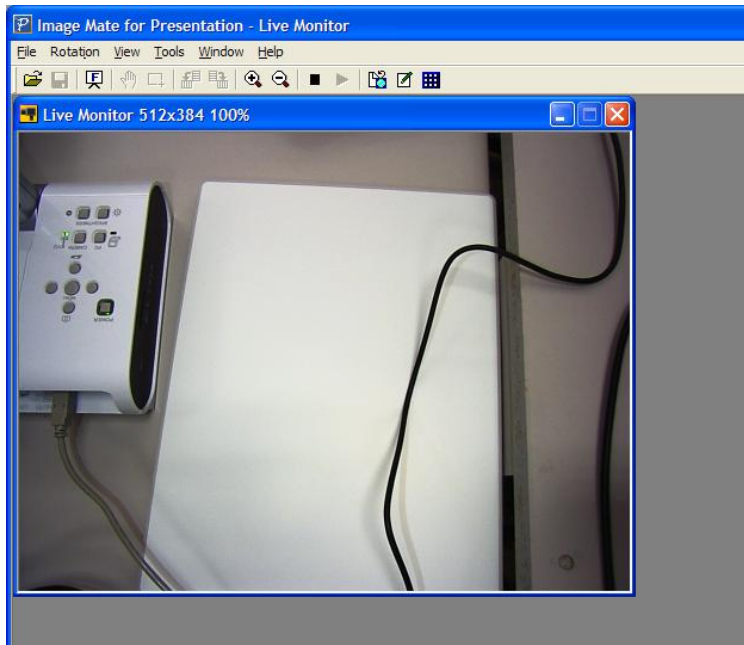
1. Make sure that the Elmo is plugged into the computer via USB cable.



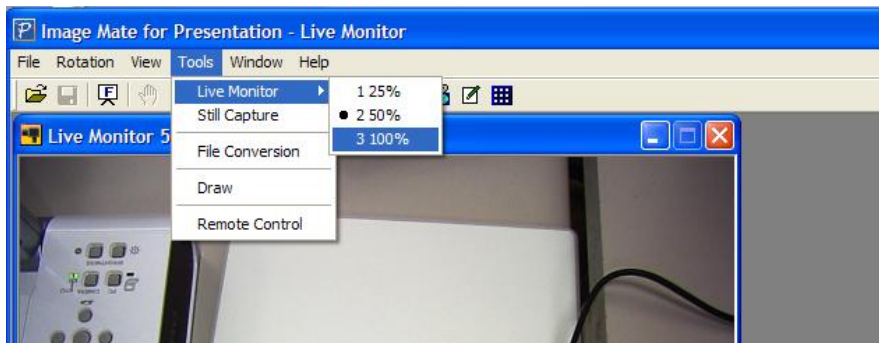
2. Double-click the Image Mate for Presentation icon located on the desktop or select Start > Elmo Utility Software (VHO) > Image Mate for Presentation.



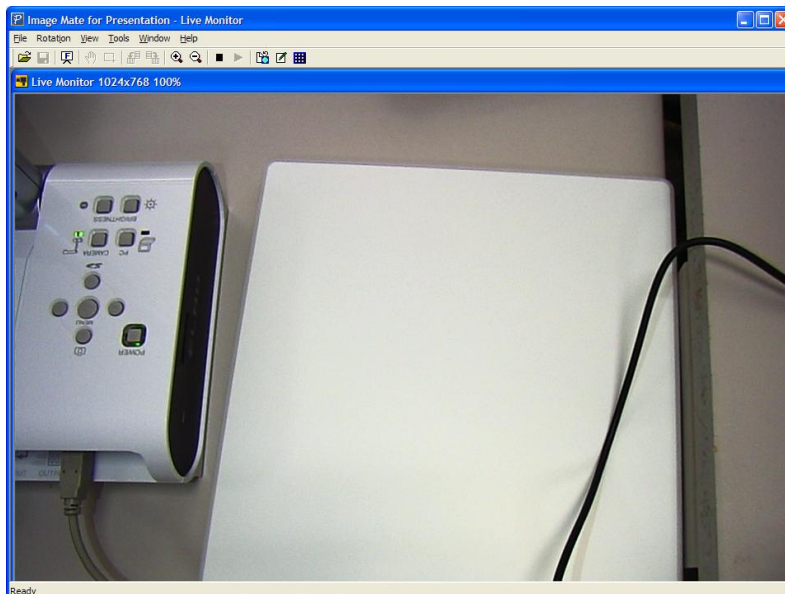
3. Once the Image Mate for Presentation window appears, click the Start button to see the document camera's image.



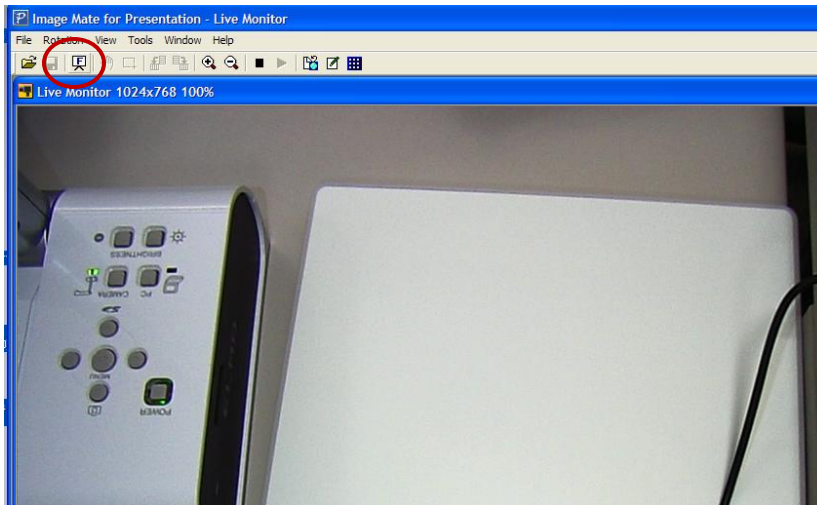
4. You should now see the live image from your Elmo TT-02s document camera.



5. If you want to view the image at 100% then select Tools > Live Monitor > 100%.



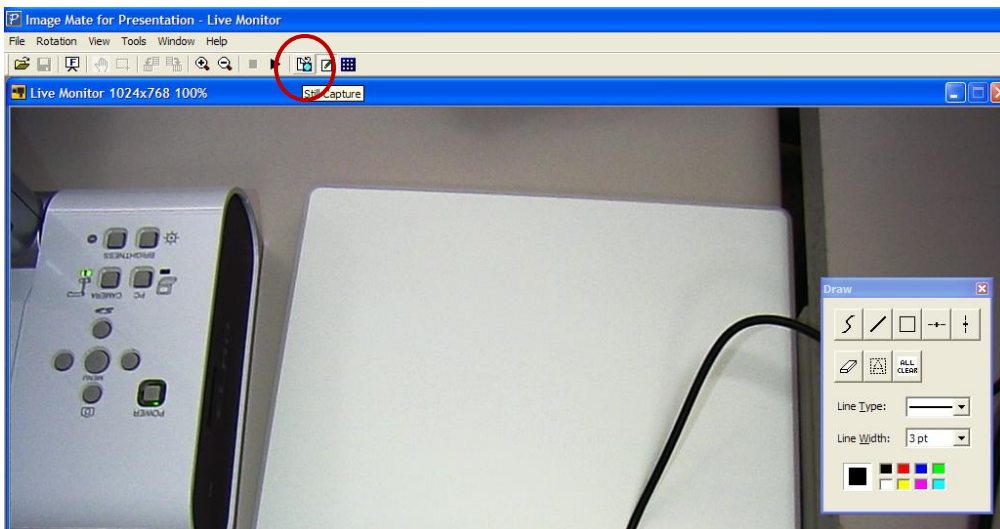
6. The image is now at 100%.



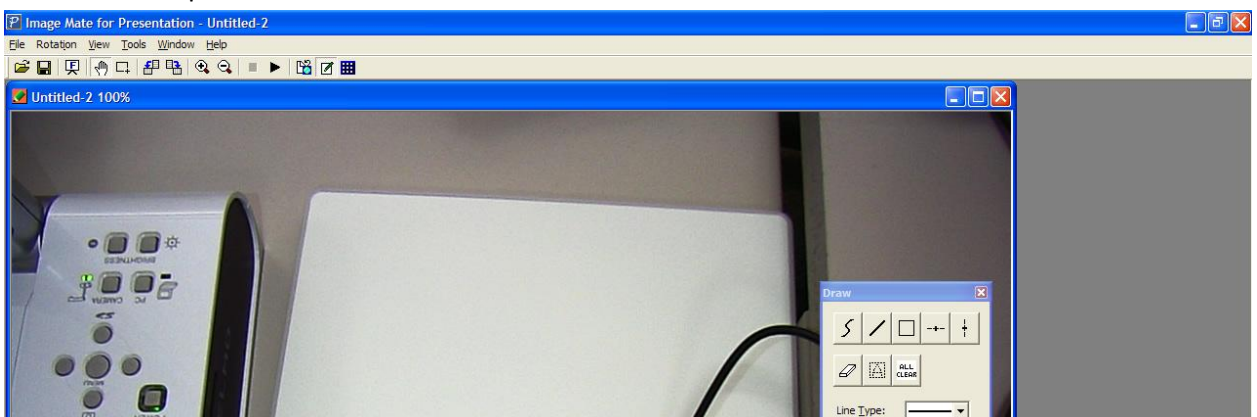
7. If you want to the image at full screen then click the Full Screen button.
8. Hit Esc when you want to get out of the Full Screen mode.

Drawing on the Image

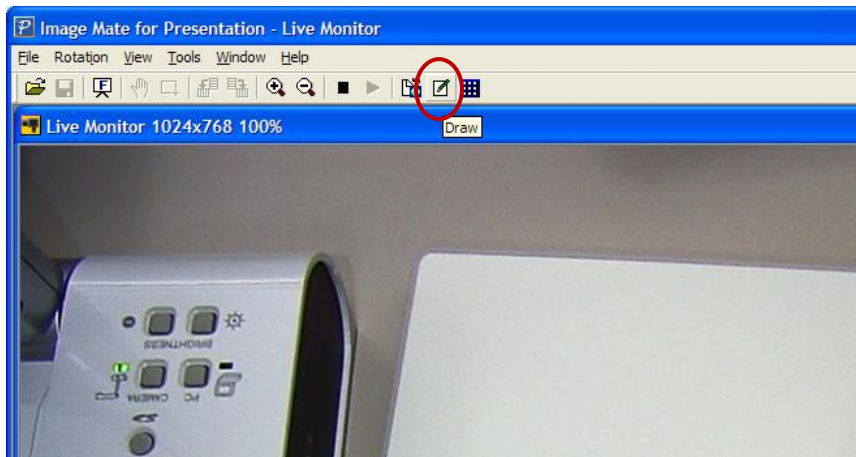
You can't draw on the live image, but you can capture the image and then draw on the captured image.



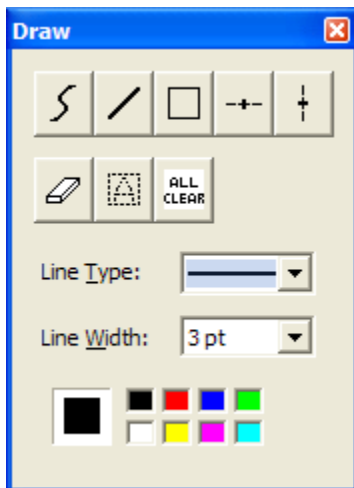
1. Click the Still Capture button.



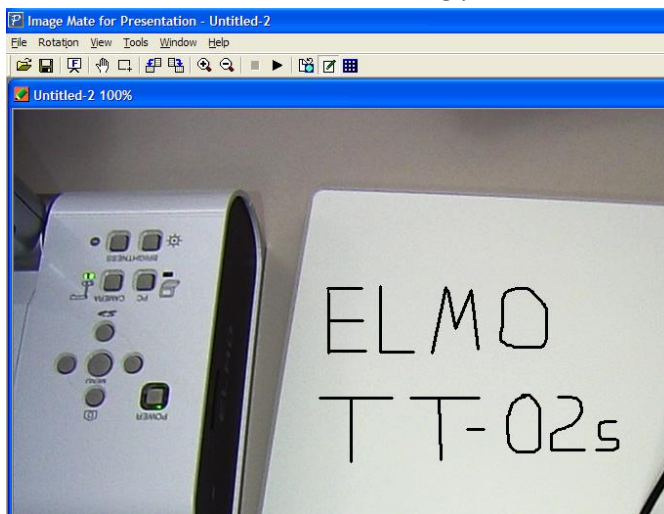
2. Notice that the untitled 100% window appears displaying your captured image.



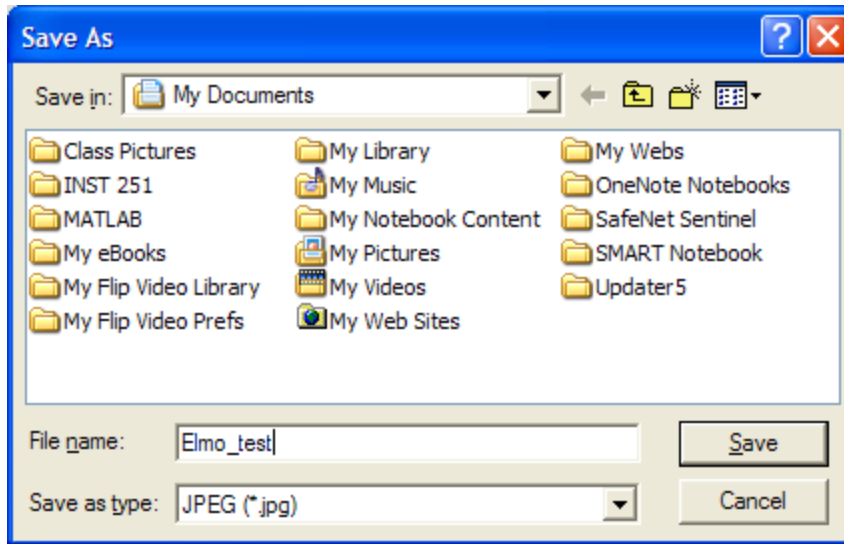
3. Click the Draw button.



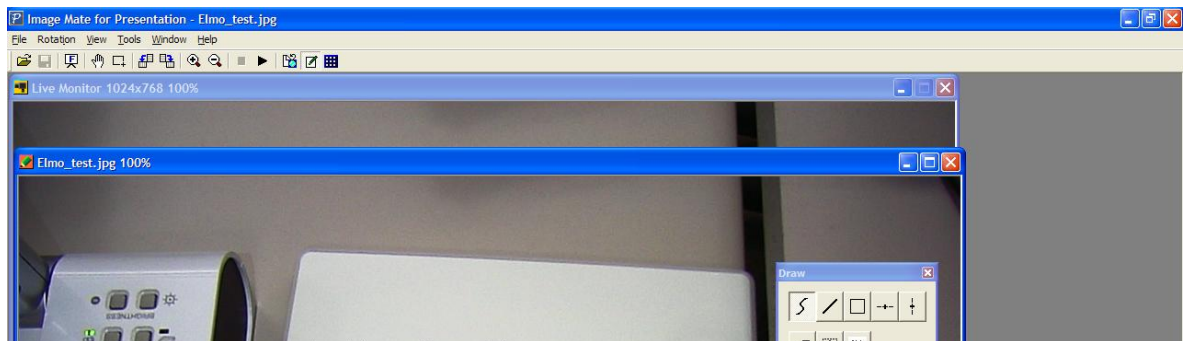
4. You should now see the Draw floating palette.



5. Using the drawing tools, you can write out content right on the image.
6. Select File > Save.



7. Save the image where you want to store of your images.



8. Close the captured image window to move back to the Live Monitor.